

# 2000 WEST LOOP SOUTH



CAPITAL  
COMMERCIAL  
INVESTMENTS, INC

 TRANSWESTERN REAL ESTATE SERVICES

# 2000 WEST LOOP SOUTH

PRIME 22-STORY OFFICE BUILDING  
LOCATED IN ONE OF THE WORLD'S  
MOST PRESTIGIOUS BUSINESS  
DISTRICTS

Exceptional Visibility

Unparalleled Ingress and Egress Along 610  
Numerous Walkable Restaurants and Hotels

Ideal Access + Prominent Location

Spec Suites Available on Levels 12 & 13

Coffee Bar in the Lobby

Fitness Center with Locker Rooms and Showers

On-site Dining

On-site Property Management

24-hour Security

# Building Features

AT 2000 WEST LOOP SOUTH



# Prime Location

THE PROJECT IS LOCATED WITHIN LESS THAN 1 MILE OF HOUSTON'S BEST RESTAURANT DISTRICTS



2000  
WEST LOOP SOUTH

1 MILE RADIUS

Starbucks  
McCormick & Schmick's SEAFOOD & STEAKS  
FLOWER CHILD  
THE RUSTIC  
etoile cuisine et bar  
MENDOCINO FARMS  
songkran thai kitchen

MASTRO'S STEAKHOUSE  
LOCAL Foods  
WILLIE G'S SEAFOOD & STEAKS  
Bloom & BEE  
Liberty Kitchen & OYSTERETTE  
H BAR  
CRAFT F&B

WHOLE FOODS MARKET  
NORTH ITALIA  
Ninfa's  
rise  
Le Table  
THE ANNIE CAFE & BAR  
SOZO sushi & lounge

Steak 48  
Le Colonial  
Ouzo Bay  
hopdoddy BURGER BAR  
TOULOUSE  
MAD  
LOCH BAR

Drexel House EATERY & WINE BAR  
P.F. CHANG'S ASIAN TABLE  
ESCALANTE'S FINE TEX-MEX & TEQUILA  
Sprinkles  
SWEET CHARIS

THE PROJECT IS LOCATED WITHIN LESS THAN 1 MILE OF HOUSTON'S BEST RESTAURANT DISTRICTS

# Great Access

AT THE CENTER OF IT ALL



## EXPLORE THE NEIGHBORHOOD

just minutes away

With retail, dining, residential and office so close, you'll never want to leave.

**2**  
minute drive to  
BLVD PLACE

**3**  
minute drive to  
THE GALLERIA

**5**  
minute drive to  
UPTOWN PARK

**5**  
minute drive to  
RIVER OAKS  
DISTRICT

**5**  
minute drive to  
MEMORIAL  
PARK



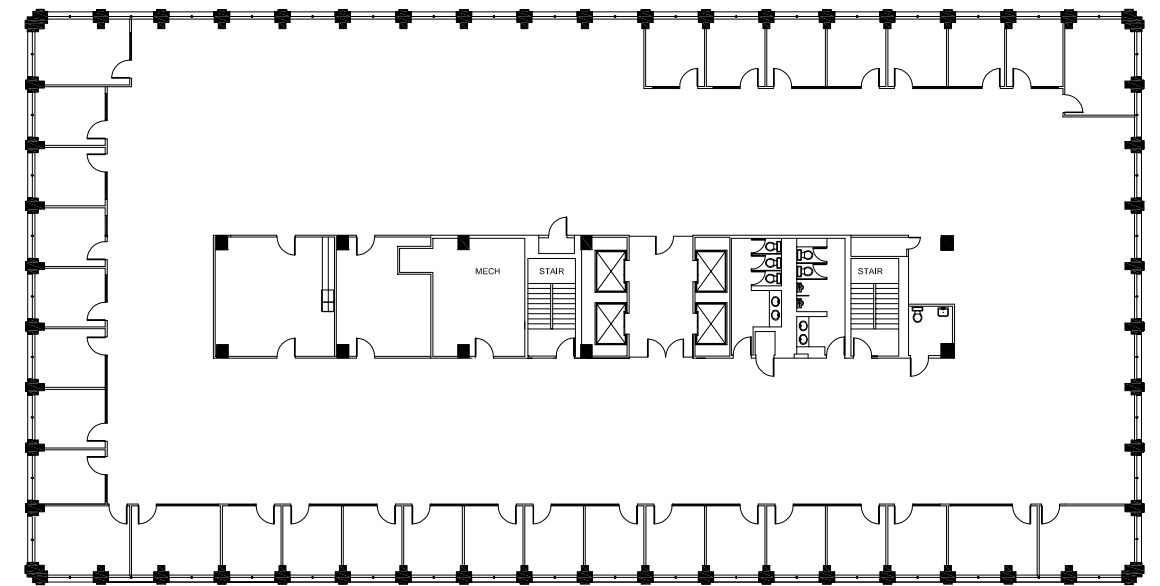
# Available Space

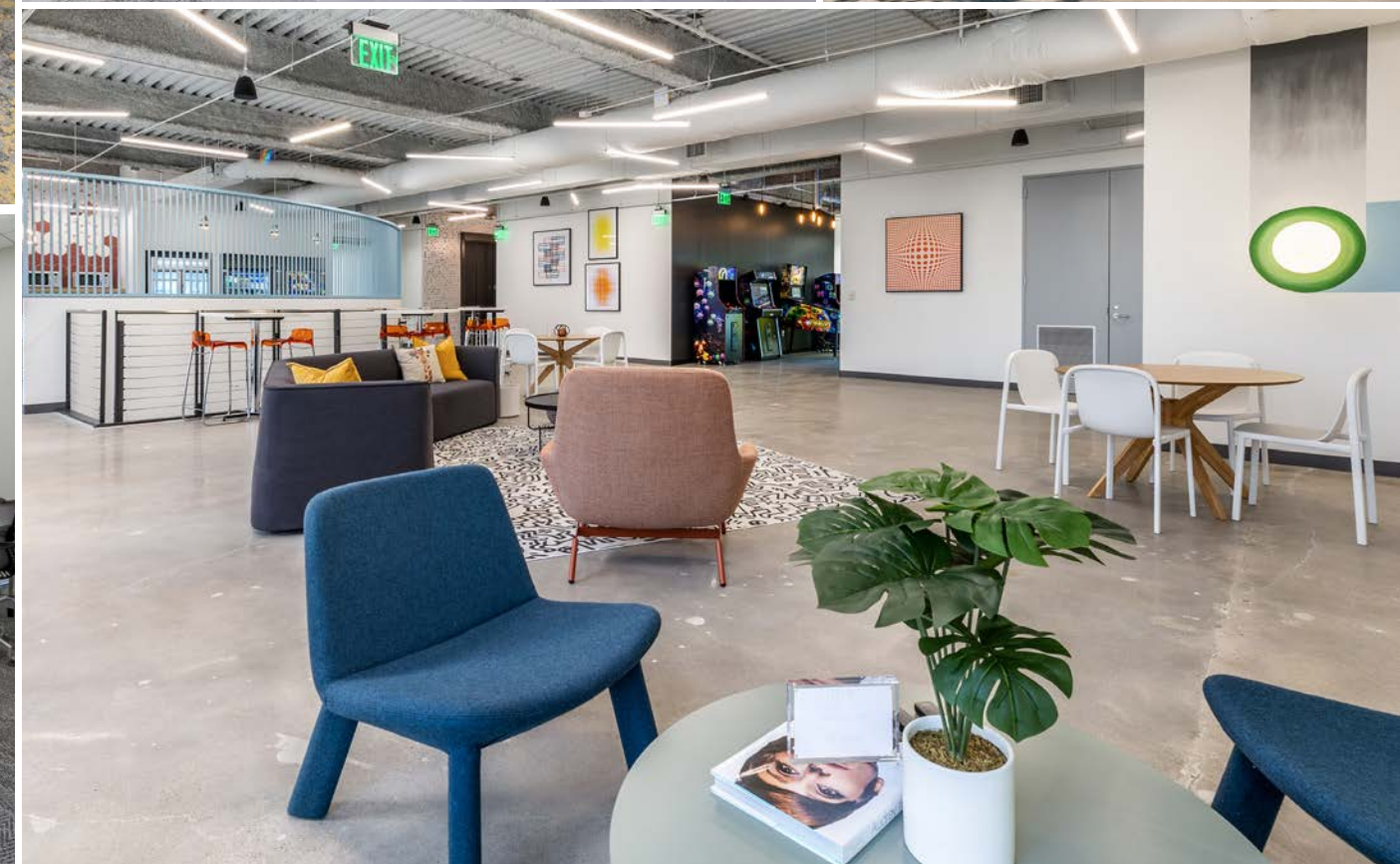


•	Suite 2021	2,509 SF
•	Suite 2010	7,430 SF
•	Suite 1900	16,809 SF
•	Suite 1800	1,352 SF
•	Suite 1700	17,421 SF
•	Suite 1600	17,046 SF
•	Suite 1500	3,543 SF
•	Suite 1550	8,476 SF
•	Suite 1400	16,377 SF
•	Suite 1300	3,088 SF
•	Suite 1200	4,002 SF
•	Suite 1100	7,689 SF
•	Suite 1150	4,720 SF
•	Suite 900	16,691 SF
•	Suite 800	16,691 SF
•	Suite 700	16,687 SF
•	Suite 600	16,801 SF
•	Suite 500	16,832 SF
•	Suite 400	12,720 SF
•	Suite 300	16,823 SF

## TYPICAL FLOOR PLAN

- » Efficient Rectangular Floor Plate
- » 16,800 Rentable Square Feet





FOR LEASING INFORMATION

PARKER BURKETT  
713.407.8716  
[parker.burkett@transwestern.com](mailto:parker.burkett@transwestern.com)

 TRANSWESTERN REAL ESTATE SERVICES