

2000 WEST LOOP SOUTH



CAPITAL
COMMERCIAL
INVESTMENTS, INC

 TRANSWESTERN REAL ESTATE SERVICES

2000 WEST LOOP SOUTH

**PRIME 22-STORY OFFICE BUILDING
LOCATED IN ONE OF THE WORLD'S
MOST PRESTIGIOUS BUSINESS
DISTRICTS**

Exceptional Visibility

Unparalleled Ingress and Egress Along 610

Numerous Walkable Restaurants and Hotels

Ideal Access + Prominent Location

Spec Suites Available on Levels 12 & 13

Coffee Bar in the Lobby

Fitness Center with Locker Rooms and Showers

On-site Dining

On-site Property Management

24-hour Security

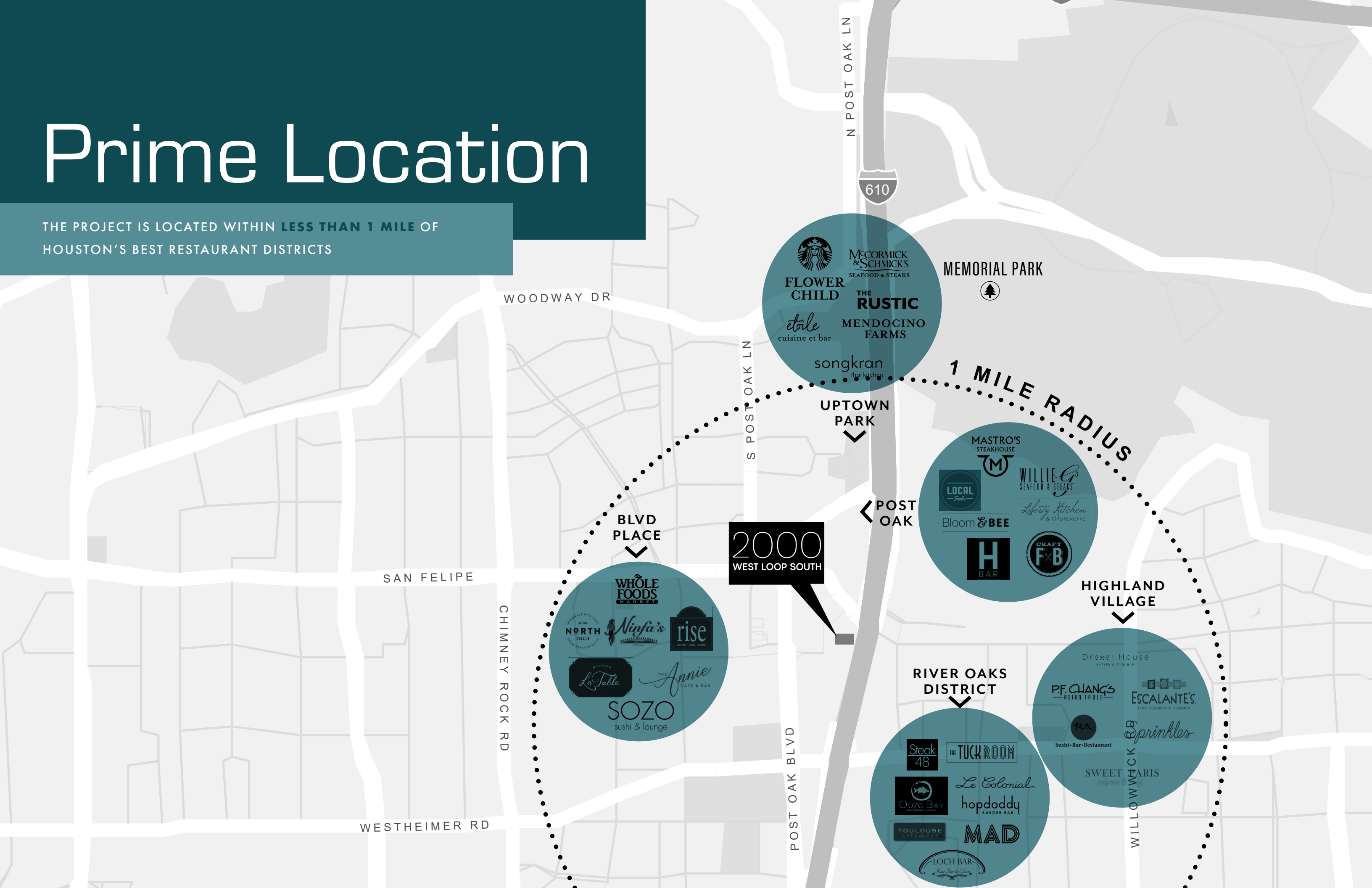
Building Features

AT 2000 WEST LOOP SOUTH



Prime Location

THE PROJECT IS LOCATED WITHIN **LESS THAN 1 MILE** OF HOUSTON'S BEST RESTAURANT DISTRICTS



Great Access

AT THE CENTER OF IT ALL



EXPLORE THE NEIGHBORHOOD

just minutes away

With retail, dining, residential and office so close, you'll never want to leave.

2
minute drive to
BLVD PLACE

3
minute drive to
THE GALLERIA

5
minute drive to
UPTOWN PARK

5
minute drive to
RIVER OAKS
DISTRICT

5
minute drive to
MEMORIAL
PARK



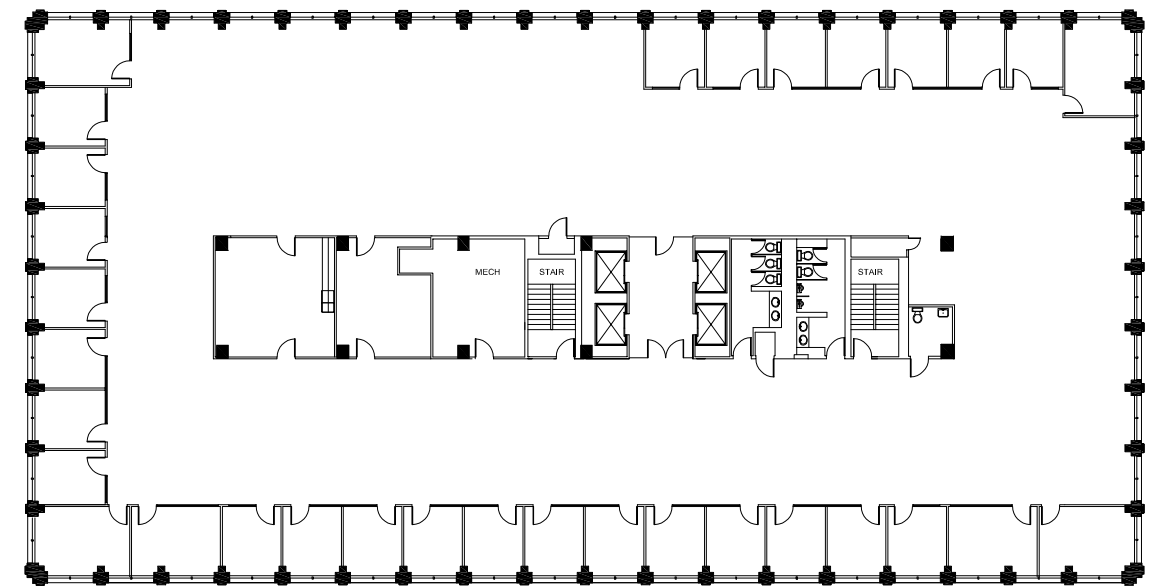
Available Space



•	Suite 2100	3,352 SF
•	Suite 2110	2,966 SF
•	Suite 2150	10,738 SF
•	Suite 2021	2,383 SF
•	Suite 2020	2,305 SF
•	Suite 2012	2,509 SF
•	Suite 2010	7,430 SF
•	Suite 1900	16,809 SF
•	Suite 1800	8,156 SF
•	Suite 1700	17,421 SF
•	Suite 1600	17,046 SF
•	Suite 1500	3,543 SF
•	Suite 1400	16,377 SF
•	Suite 1300	9,622 SF
•	Suite 1200	12,222 SF
•	Suite 1100	7,689 SF
•	Suite 1060	1,427 SF
•	Suite 900	16,691 SF
•	Suite 800	16,691 SF
•	Suite 700	16,687 SF
•	Suite 600	16,801 SF
•	Suite 500	16,832 SF
•	Suite 430	3,521 SF
•	Suite 400	9,199 SF
•	Suite 300	16,823 SF

TYPICAL FLOOR PLAN

- » Efficient Rectangular Floor Plate
- » 16,800 Rentable Square Feet





FOR LEASING INFORMATION

PARKER BURKETT
713.407.8716
parker.burkett@transwestern.com